

Represent an Electoral District

how can
I help?

What are electoral districts?

In South Australia, an electoral district (sometimes people say electorates) is a geographical area of the state represented by a Member of Parliament.

The House of Assembly has 47 electoral districts, so there are 47 members in the House of Assembly.

The House of Assembly Electoral districts are based on voting population. Roughly 27,000 voters live inside each electoral district.

The Legislative Council has a single electoral district - the whole of South Australia. All 22 Members represent the whole state.

How to Use This Deck

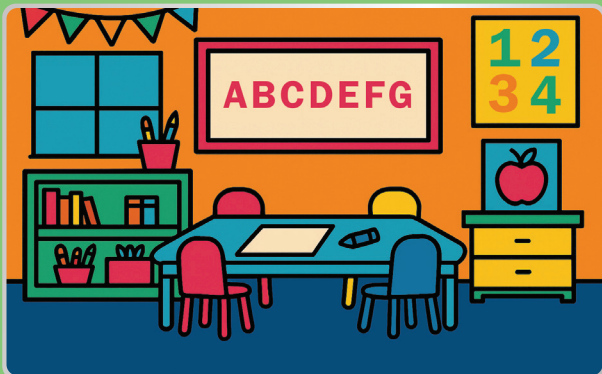
As a lesson/task:

1. Draw a card from the deck and look at the electoral district profile. This can be done individually or in small groups.
2. Complete one or all of the activities on the back of the card.

As inspiration:

Use the cards as examples and get the students to invent their own electoral district.

Reception Classes



Population - 105

Where - R-6 primary school in Adelaide's Northern suburbs.

Community - These students are in their first ever term at school. Reception students are 4-6 years old.

There are 4 classes, each with one teacher. The classes are in a junior primary classroom block.

Fold Here

Instructions

1. Come up with a name for this electorate. Sometimes electorates are named after features in the area, the Traditional Owners of the land or a word in First Nations languages, or important people from that area.
2. Brainstorm what you think the big issues are for this electorate. What are the people worried about? What do they need?
3. Write 3-4 questions you want to ask the people in your electorate to help you understand their needs better.
4. Make a list of the 5-10 things you'd do to get involved in this community.
5. Draft your first speech to Parliament about this electorate.

**Parliament of
South Australia**

Year 6 Classes



Population - 150

Where - R-6 primary school in the Adelaide Southern suburbs.

Community - These students are in their last ever term of primary school. Year 6 students are 11-12 years old.

There are 6 classes, each with one teacher. The classes are in an upper primary area of the school.

Fold Here

Instructions

1. Come up with a name for this electorate. Sometimes electorates are named after features in the area, the Traditional Owners of the land or a word in First Nations languages, or important people from that area.
2. Brainstorm what you think the big issues are for this electorate. What are the people worried about? What do they need?
3. Write 3-4 questions you want to ask the people in your electorate to help you understand their needs better.
4. Make a list of the 5-10 things you'd do to get involved in this community.
5. Draft your first speech to Parliament about this electorate.

**Parliament of
South Australia**

Year 7 Classes



Population - 200

Where - R-12 super school in the Adelaide suburbs.

Community - These students are in their first ever term of high school. They are 12-13 years old.

They have their own homegroup with a homegroup teacher, but then each class has its own set timetable of subjects. The students move around throughout the day.

Fold Here

Instructions

1. Come up with a name for this electorate. Sometimes electorates are named after features in the area, the Traditional Owners of the land or a word in First Nations languages, or important people from that area.
2. Brainstorm what you think the big issues are for this electorate. What are the people worried about? What do they need?
3. Write 3-4 questions you want to ask the people in your electorate to help you understand their needs better.
4. Make a list of the 5-10 things you'd do to get involved in this community.
5. Draft your first speech to Parliament about this electorate.

**Parliament of
South Australia**

Year 12 Classes



Population - 76

Where - 7-12 secondary school in a regional town.

Community - These students are in term 2 in their final year of school. Some hope to complete their SACE, while others might be looking into trades or travel opportunities. They are 16-18 years old.

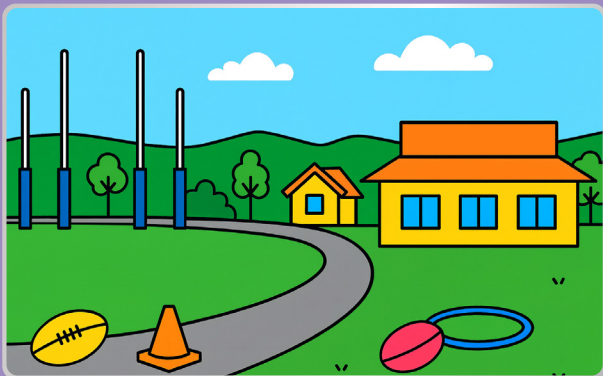
Fold Here

Instructions

1. Come up with a name for this electorate. Sometimes electorates are named after features in the area, the Traditional Owners of the land or a word in First Nations languages, or important people from that area.
2. Brainstorm what you think the big issues are for this electorate. What are the people worried about? What do they need?
3. Write 3-4 questions you want to ask the people in your electorate to help you understand their needs better.
4. Make a list of the 5-10 things you'd do to get involved in this community.
5. Draft your first speech to Parliament about this electorate.

**Parliament of
South Australia**

Community Oval



Population - The population changes regularly, being very busy during sports games, but at other times quiet, with people walking their dogs or going for a run.

Where - The local town oval in a small SA town.

Community - On weekdays, seniors walk on the path around the oval. On Saturday mornings, a parkrun for people of all ages starts at the oval. In winter, the local football league uses the oval for training and matches, and in summer the local cricket team uses the oval for training and matches.

Fold Here

Instructions

1. Come up with a name for this electorate. Sometimes electorates are named after features in the area, the Traditional Owners of the land or a word in First Nations languages, or important people from that area.

2. Brainstorm what you think the big issues are for this electorate. What are the people worried about? What do they need?

3. Write 3-4 questions you want to ask the people in your electorate to help you understand their needs better.

4. Make a list of the 5-10 things you'd do to get involved in this community.

5. Draft your first speech to Parliament about this electorate.

Parliament of
South Australia

Retirement Village



Population - 100

Where - Retirement Village in the Southern suburbs of Adelaide.

Community - The majority of residents are 75 years old or more. There are some administrative, groundskeeping, housekeeping and medical staff that support the residents. The residents of the retirement village hope that more activities and events can be brought to the centre so they can enjoy their time there.

Fold Here

Instructions

1. Come up with a name for this electorate. Sometimes electorates are named after features in the area, the Traditional Owners of the land or a word in First Nations languages, or important people from that area.

2. Brainstorm what you think the big issues are for this electorate. What are the people worried about? What do they need?

3. Write 3-4 questions you want to ask the people in your electorate to help you understand their needs better.

4. Make a list of the 5-10 things you'd do to get involved in this community.

5. Draft your first speech to Parliament about this electorate.

Parliament of
South Australia

Port Town



Population - 5,300

Where - Port town on the Eyre Peninsula.

Community - Once a busy port town exporting wheat and grain, the port is not as busy as it used to be, so many people and businesses have left town over the years.

Residents hope to find ways to bring more people and businesses back to the town. The young people in the community hope for more fun recreational activities, as well as more educational and job options.

Fold Here

Instructions

1. Come up with a name for this electorate. Sometimes electorates are named after features in the area, the Traditional Owners of the land or a word in First Nations languages, or important people from that area.

2. Brainstorm what you think the big issues are for this electorate. What are the people worried about? What do they need?

3. Write 3-4 questions you want to ask the people in your electorate to help you understand their needs better.

4. Make a list of the 5-10 things you'd do to get involved in this community.

5. Draft your first speech to Parliament about this electorate.

**Parliament of
South Australia**

Fruit Growing Community



Population - 3,750

Where - Agricultural fruit-growing community in the Riverland region.

Community - Farmers in the area rely on the River Murray to support their agriculture. The health and viability of the river is of great concern for the fruit growers in the region.

Young people in the area, especially those not old enough to drive, struggle with getting between the different towns along the river to see friends and get to sporting events.

Fold Here

Instructions

1. Come up with a name for this electorate. Sometimes electorates are named after features in the area, the Traditional Owners of the land or a word in First Nations languages, or important people from that area.

2. Brainstorm what you think the big issues are for this electorate. What are the people worried about? What do they need?

3. Write 3-4 questions you want to ask the people in your electorate to help you understand their needs better.

4. Make a list of the 5-10 things you'd do to get involved in this community.

5. Draft your first speech to Parliament about this electorate.

**Parliament of
South Australia**

Mining Community



Population - 4,000

Where - A mining community in the rural desert region in the north of SA.

Community - The local economy relies heavily on the mining industry. Making sure the mining sector remains in town is the primary concern of residents.

The population of the town changes regularly as people fly in and out of the town using the small red dirt airstrip, and the workers who want to live in the town struggle to find accommodation.

Fold Here

Instructions

1. Come up with a name for this electorate. Sometimes electorates are named after features in the area, the Traditional Owners of the land or a word in First Nations languages, or important people from that area.

2. Brainstorm what you think the big issues are for this electorate. What are the people worried about? What do they need?

3. Write 3-4 questions you want to ask the people in your electorate to help you understand their needs better.

4. Make a list of the 5-10 things you'd do to get involved in this community.

5. Draft your first speech to Parliament about this electorate.

Parliament of South Australia

Inner City Apartment Zone



Population - 15,000

Where - Neighbourhood in the inner part of the city's CBD, with many of the residents living in apartments and not owning a personal vehicle.

Community - Many of the residents in the area are young adults attending university, many of whom are also international students.

Residents rely on public transport to get around the city. As many are young and do not own their own home they are struggling with the cost of renting in the area.

Fold Here

Instructions

1. Come up with a name for this electorate. Sometimes electorates are named after features in the area, the Traditional Owners of the land or a word in First Nations languages, or important people from that area.

2. Brainstorm what you think the big issues are for this electorate. What are the people worried about? What do they need?

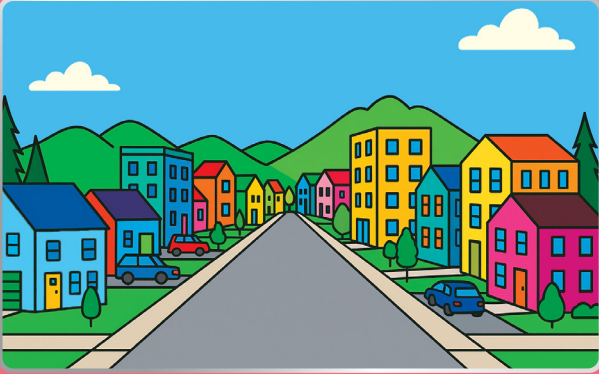
3. Write 3-4 questions you want to ask the people in your electorate to help you understand their needs better.

4. Make a list of the 5-10 things you'd do to get involved in this community.

5. Draft your first speech to Parliament about this electorate.

Parliament of South Australia

New Suburb



Population - 10,000

Where - Newly developed suburban area in Adelaide's northern suburban sprawl.

Community - The area has seen a lot of growth and development as new housing is built in the area, however roads and services are at capacity.

There is no public transport or school in the new suburb itself, with residents needing to drive on the same road in and out of the suburb to get to work, shops, and school. The area is mostly young families.

Fold Here

Instructions

1. Come up with a name for this electorate. Sometimes electorates are named after features in the area, the Traditional Owners of the land or a word in First Nations languages, or important people from that area.
2. Brainstorm what you think the big issues are for this electorate. What are the people worried about? What do they need?
3. Write 3-4 questions you want to ask the people in your electorate to help you understand their needs better.
4. Make a list of the 5-10 things you'd do to get involved in this community.
5. Draft your first speech to Parliament about this electorate.

**Parliament of
South Australia**

Wine Producing Region



Population - 8,000

Where - A semi rural wine-growing community in the outer reaches of the Adelaide Hills.

Community - Residents are primarily concerned with supporting the production of wine, especially ensuring that South Australian wine producers are able to sell their goods to countries overseas and have government support.

Residents believe there is potential to develop a tourism industry in the town based around the wineries and scenery in the area.

Fold Here

Instructions

1. Come up with a name for this electorate. Sometimes electorates are named after features in the area, the Traditional Owners of the land or a word in First Nations languages, or important people from that area.
2. Brainstorm what you think the big issues are for this electorate. What are the people worried about? What do they need?
3. Write 3-4 questions you want to ask the people in your electorate to help you understand their needs better.
4. Make a list of the 5-10 things you'd do to get involved in this community.
5. Draft your first speech to Parliament about this electorate.

**Parliament of
South Australia**

Skyscraper



Population - This changes on whether it is a work day (around 2,000) or the weekend (around 300).

Where - Skyscraper in the city with different floors.

Community - On the ground level are cafes and shops. The first twenty levels are occupied by different businesses including a printing business, an online news site, and a radio station. The top three levels are made up of residential apartments housing retirees, young families, and students.

Fold Here

Instructions

1. Come up with a name for this electorate. Sometimes electorates are named after features in the area, the Traditional Owners of the land or a word in First Nations languages, or important people from that area.
2. Brainstorm what you think the big issues are for this electorate. What are the people worried about? What do they need?
3. Write 3-4 questions you want to ask the people in your electorate to help you understand their needs better.
4. Make a list of the 5-10 things you'd do to get involved in this community.
5. Draft your first speech to Parliament about this electorate.

Parliament of
South Australia

SA's Senior Community



Population - All South Australia's oldest senior residents 85 years and older – approximately 50,000 people across the state.

Where - Across the state of South Australia.

Community - The needs of South Australia's oldest senior citizens are very different to any other age group. Many may require additional care and specific forms of support to address their needs.

Fold Here

Instructions

1. Come up with a name for this electorate. Sometimes electorates are named after features in the area, the Traditional Owners of the land or a word in First Nations languages, or important people from that area.
2. Brainstorm what you think the big issues are for this electorate. What are the people worried about? What do they need?
3. Write 3-4 questions you want to ask the people in your electorate to help you understand their needs better.
4. Make a list of the 5-10 things you'd do to get involved in this community.
5. Draft your first speech to Parliament about this electorate.

Parliament of
South Australia

Hospital



Population - Over 200 nurses, doctors, surgeons, staff and hundreds of patients regularly inside the building.

Where - Adelaide's inner city.

Community - The needs of the hospital staff will need to be balanced with the needs of patients and visitors, especially to ensure the best possible care can be provided.

Fold Here

Instructions

1. Come up with a name for this electorate. Sometimes electorates are named after features in the area, the Traditional Owners of the land or a word in First Nations languages, or important people from that area.
2. Brainstorm what you think the big issues are for this electorate. What are the people worried about? What do they need?
3. Write 3-4 questions you want to ask the people in your electorate to help you understand their needs better.
4. Make a list of the 5-10 things you'd do to get involved in this community.
5. Draft your first speech to Parliament about this electorate.

Parliament of
South Australia

Wildlife Park



Population - There are about 50 staff, including park rangers, animal carers, and gift shop staff. There are 100-700 visitors daily, depending on whether it's the weekend, or if there is good weather.

Where - Wildlife park in the Adelaide Hills.

Community - The park contains many different Australian wildlife, including kangaroos, koalas, echidnas, wombats, reptiles, and birds. Staff at the park care for the wildlife by feeding the animals, keeping their enclosures and surroundings clean, and teaching visitors about the animals.

Fold Here

Instructions

1. Come up with a name for this electorate. Sometimes electorates are named after features in the area, the Traditional Owners of the land or a word in First Nations languages, or important people from that area.
2. Brainstorm what you think the big issues are for this electorate. What are the people worried about? What do they need?
3. Write 3-4 questions you want to ask the people in your electorate to help you understand their needs better.
4. Make a list of the 5-10 things you'd do to get involved in this community.
5. Draft your first speech to Parliament about this electorate.

Parliament of
South Australia

Botanic Garden



Population - There are 50 staff who work to maintain the garden and look after the plant life, as well as visitors who come to enjoy the scenery and learn about the many different plants.

Where - Large botanical garden located in Adelaide.

Community - The garden is home to diverse species of plant life including Australian plants, trees, and flowers, as well as non-native plant life. A high number of birds and insects make their home in the botanical garden.

Fold Here

Instructions

1. Come up with a name for this electorate. Sometimes electorates are named after features in the area, the Traditional Owners of the land or a word in First Nations languages, or important people from that area.

2. Brainstorm what you think the big issues are for this electorate. What are the people worried about? What do they need?

3. Write 3-4 questions you want to ask the people in your electorate to help you understand their needs better.

4. Make a list of the 5-10 things you'd do to get involved in this community.

5. Draft your first speech to Parliament about this electorate.

Parliament of
South Australia

Beachside Marina



Population - 100 regular marina users, but many pedestrians and tourists.

Where - Marina in a beachside suburb. As a seaside community, many residents use the piers in the marina to keep their boats and sailing yachts secure.

Community - As a picturesque waterfront area, tourism has become popular, which has caused some issues for residents who use the facilities for fishing and work. The local yacht club and surf lifesaving club are also based in the marina and have complained that their facilities are becoming old and too small.

Fold Here

Instructions

1. Come up with a name for this electorate. Sometimes electorates are named after features in the area, the Traditional Owners of the land or a word in First Nations languages, or important people from that area.

2. Brainstorm what you think the big issues are for this electorate. What are the people worried about? What do they need?

3. Write 3-4 questions you want to ask the people in your electorate to help you understand their needs better.

4. Make a list of the 5-10 things you'd do to get involved in this community.

5. Draft your first speech to Parliament about this electorate.

Parliament of
South Australia

Youth of SA



Population - 10-24 year olds across the state, approximately 34% of SA's population, or 612,000 people.

Where - Across the state of South Australia.

Community - Young people in SA are seeking a strong advocate who understands the needs of youth. There are big concerns about cost-of-living and the future of our state's environment.

Fold Here

Instructions

1. Come up with a name for this electorate. Sometimes electorates are named after features in the area, the Traditional Owners of the land or a word in First Nations languages, or important people from that area.
2. Brainstorm what you think the big issues are for this electorate. What are the people worried about? What do they need?
3. Write 3-4 questions you want to ask the people in your electorate to help you understand their needs better.
4. Make a list of the 5-10 things you'd do to get involved in this community.
5. Draft your first speech to Parliament about this electorate.

Parliament of South Australia

Professional Fishing Community



Population - 300

Where - Coastal communities in South Australia.

Community - 300 South Australians living in coastal areas rely on fishing to earn their professional income. Some in the fishing industry feel that environmental regulations may be impacting their ability to earn enough money to stay in business.

There is also a big increase in recreational fishers and they wish to see more control over licensing.

Fold Here

Instructions

1. Come up with a name for this electorate. Sometimes electorates are named after features in the area, the Traditional Owners of the land or a word in First Nations languages, or important people from that area.
2. Brainstorm what you think the big issues are for this electorate. What are the people worried about? What do they need?
3. Write 3-4 questions you want to ask the people in your electorate to help you understand their needs better.
4. Make a list of the 5-10 things you'd do to get involved in this community.
5. Draft your first speech to Parliament about this electorate.

Parliament of South Australia

School Drama Studio



Population - Usually 30 at a time, but sometimes up to 200 people are in the studio to watch a student show.

Where - 7-12 secondary school in the Adelaide metropolitan area.

Community - Drama classes from years 7-12 use the studio for their practical lessons over the course of a week. Sometimes it is used for performances. Students have been complaining that the blocks have run out of felt, and that the light and sound system hasn't been updated in a long time.

Fold Here

Instructions

1. Come up with a name for this electorate. Sometimes electorates are named after features in the area, the Traditional Owners of the land or a word in First Nations languages, or important people from that area.
2. Brainstorm what you think the big issues are for this electorate. What are the people worried about? What do they need?
3. Write 3-4 questions you want to ask the people in your electorate to help you understand their needs better.
4. Make a list of the 5-10 things you'd do to get involved in this community.
5. Draft your first speech to Parliament about this electorate.

Parliament of
South Australia

School Oval



Population - 30-600

Where - R-6 primary school in a regional town.

Community - Classes sometimes use the school oval for PE lessons, but it is also used for the school sports day and the end of year concert. There is a cracked cricket pitch in the middle, permanent football posts, and moveable soccer goals but with broken nets.

Fold Here

Instructions

1. Come up with a name for this electorate. Sometimes electorates are named after features in the area, the Traditional Owners of the land or a word in First Nations languages, or important people from that area.
2. Brainstorm what you think the big issues are for this electorate. What are the people worried about? What do they need?
3. Write 3-4 questions you want to ask the people in your electorate to help you understand their needs better.
4. Make a list of the 5-10 things you'd do to get involved in this community.
5. Draft your first speech to Parliament about this electorate.

Parliament of
South Australia

School Library



Population - 30-200

Where - R-12 superschool in the Adelaide metropolitan area.

Community - The whole school, from reception to year 12, will make lesson time bookings to go into the library and borrow books. Sometimes classes use the library for research lessons. At recess and lunch, students use the library to read and have quiet time. There are no displays at the moment, and it has been 6 months since new books were ordered in.

Fold Here

Instructions

1. Come up with a name for this electorate. Sometimes electorates are named after features in the area, the Traditional Owners of the land or a word in First Nations languages, or important people from that area.

2. Brainstorm what you think the big issues are for this electorate. What are the people worried about? What do they need?

3. Write 3-4 questions you want to ask the people in your electorate to help you understand their needs better.

4. Make a list of the 5-10 things you'd do to get involved in this community.

5. Draft your first speech to Parliament about this electorate.

Parliament of South Australia

School Staff Room



Population - 0-50 - it depends on who is having a break and whether it is lunch or recess.

Where - R-6 primary school.

Community - Everyone using the staff room is an adult that works at the school. They are usually using the space when they are having their breaks. It has information boards and notices for teachers.

Fold Here

Instructions

1. Come up with a name for this electorate. Sometimes electorates are named after features in the area, the Traditional Owners of the land or a word in First Nations languages, or important people from that area.

2. Brainstorm what you think the big issues are for this electorate. What are the people worried about? What do they need?

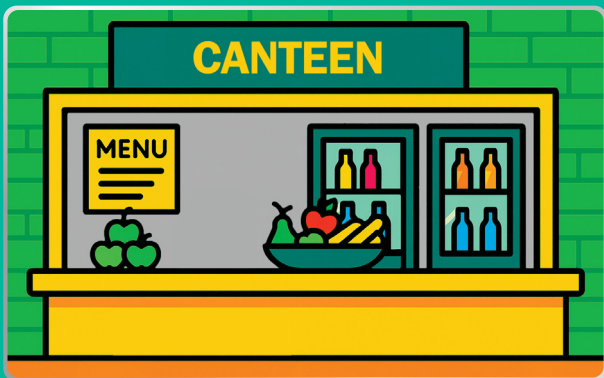
3. Write 3-4 questions you want to ask the people in your electorate to help you understand their needs better.

4. Make a list of the 5-10 things you'd do to get involved in this community.

5. Draft your first speech to Parliament about this electorate.

Parliament of South Australia

School Canteen



Population - Up to 150.

Where - 7-12 secondary school.

Community - The school canteen is used by students only, but is run by adult volunteers.

Parents and families are concerned about healthy options, but students are worried about the cost of products.

Fold Here

Instructions

1. Come up with a name for this electorate. Sometimes electorates are named after features in the area, the Traditional Owners of the land or a word in First Nations languages, or important people from that area.

2. Brainstorm what you think the big issues are for this electorate. What are the people worried about? What do they need?

3. Write 3-4 questions you want to ask the people in your electorate to help you understand their needs better.

4. Make a list of the 5-10 things you'd do to get involved in this community.

5. Draft your first speech to Parliament about this electorate.

**Parliament of
South Australia**

School Gym



Population - Up to 400.

Where - R-6 primary school.

Community - Classes of 30 at a time use the school gym during their weekly PE lessons for basketball, handball, or other indoor games. The gym is also used for school assemblies, where the whole school community comes together.

Fold Here

Instructions

1. Come up with a name for this electorate. Sometimes electorates are named after features in the area, the Traditional Owners of the land or a word in First Nations languages, or important people from that area.

2. Brainstorm what you think the big issues are for this electorate. What are the people worried about? What do they need?

3. Write 3-4 questions you want to ask the people in your electorate to help you understand their needs better.

4. Make a list of the 5-10 things you'd do to get involved in this community.

5. Draft your first speech to Parliament about this electorate.

**Parliament of
South Australia**

Adelaide Oval



Population - It depends on the date and event. It ranges from 300-55,000.

Where - Adelaide CBD.

Community - The oval hosts events ranging from small functions and business meetings, to school formals and gala dinners, all the way through to major concerts and sporting events. Visitors get frustrated at long lines for toilets and food, and where to park their cars.

Fold Here

Instructions

1. Come up with a name for this electorate. Sometimes electorates are named after features in the area, the Traditional Owners of the land or a word in First Nations languages, or important people from that area.
2. Brainstorm what you think the big issues are for this electorate. What are the people worried about? What do they need?
3. Write 3-4 questions you want to ask the people in your electorate to help you understand their needs better.
4. Make a list of the 5-10 things you'd do to get involved in this community.
5. Draft your first speech to Parliament about this electorate.

Parliament of
South Australia

Linear Park (Karrawirra Pari)



Population - The number of users depends on the weather, whether it is the weekend or a weekday, and whether there is an event on.

Where - A cycling track the length of the River Torrens from Athelstone down to West Beach.

Community - Cyclists, runners, families, residents walking, tourists.

Fold Here

Instructions

1. Come up with a name for this electorate. Sometimes electorates are named after features in the area, the Traditional Owners of the land or a word in First Nations languages, or important people from that area.
2. Brainstorm what you think the big issues are for this electorate. What are the people worried about? What do they need?
3. Write 3-4 questions you want to ask the people in your electorate to help you understand their needs better.
4. Make a list of the 5-10 things you'd do to get involved in this community.
5. Draft your first speech to Parliament about this electorate.

Parliament of
South Australia

Kuipto Forest



Population - About 200 people in the surrounding area, but thousands of visitors and tourists visit to camp and bushwalk.

Where - 3,600 hectares of reserve in the Mount Lofty Ranges, 45 minutes Southeast of Adelaide.

Community - The forest is used for commercial forestry, with pine being harvested for softwood timber. Many people in the surrounding area work in the forestry industry.

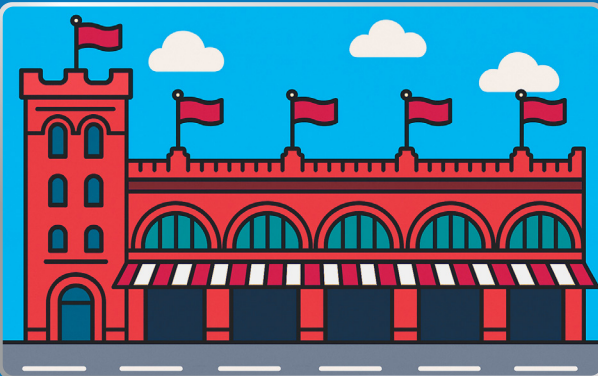
Fold Here

Instructions

1. Come up with a name for this electorate. Sometimes electorates are named after features in the area, the Traditional Owners of the land or a word in First Nations languages, or important people from that area.
2. Brainstorm what you think the big issues are for this electorate. What are the people worried about? What do they need?
3. Write 3-4 questions you want to ask the people in your electorate to help you understand their needs better.
4. Make a list of the 5-10 things you'd do to get involved in this community.
5. Draft your first speech to Parliament about this electorate.

Parliament of
South Australia

Central Market



Population - Over 70 businesses, hundreds of staff, and thousands of visitors each day.

Where - Gouger Street, in the middle of the Adelaide CBD.

Community - Small businesses and traders operate in the central markets, selling locally sourced produce and goods. The traders in the markets rely on business being smooth, and a high number of visitors coming through the markets each day.

Fold Here

Instructions

1. Come up with a name for this electorate. Sometimes electorates are named after features in the area, the Traditional Owners of the land or a word in First Nations languages, or important people from that area.
2. Brainstorm what you think the big issues are for this electorate. What are the people worried about? What do they need?
3. Write 3-4 questions you want to ask the people in your electorate to help you understand their needs better.
4. Make a list of the 5-10 things you'd do to get involved in this community.
5. Draft your first speech to Parliament about this electorate.

Parliament of
South Australia

Local Dog Park



Population - Regularly used by 100 people per day.

Where - Small local park in the suburbs of Adelaide.

Community - Each day local residents use the facilities at the dog park, which include an obstacle course for dogs to run through, and a park for fetch and ball games. Nearby is a playground, however there is no tap for water, no fenced-off area for small dogs, and no bench to sit down on.

Fold Here

Instructions

1. Come up with a name for this electorate. Sometimes electorates are named after features in the area, the Traditional Owners of the land or a word in First Nations languages, or important people from that area.

2. Brainstorm what you think the big issues are for this electorate. What are the people worried about? What do they need?

3. Write 3-4 questions you want to ask the people in your electorate to help you understand their needs better.

4. Make a list of the 5-10 things you'd do to get involved in this community.

5. Draft your first speech to Parliament about this electorate.

Parliament of
South Australia

Primary School Playground



Population - 150 throughout school days.

Where - R-6 school in a regional town in SA.

Community - On school days, reception to year 6 students use the playground. Next to the playground is a concrete court with lines painted for basketball, netball, and foursquare. There are also tables around the playground for students to sit and eat lunch. The school has grown in recent years, and the playground is often at capacity, with long lines for the swings and slide. The receptions feel nervous playing next to the year 6 students.

Fold Here

Instructions

1. Come up with a name for this electorate. Sometimes electorates are named after features in the area, the Traditional Owners of the land or a word in First Nations languages, or important people from that area.

2. Brainstorm what you think the big issues are for this electorate. What are the people worried about? What do they need?

3. Write 3-4 questions you want to ask the people in your electorate to help you understand their needs better.

4. Make a list of the 5-10 things you'd do to get involved in this community.

5. Draft your first speech to Parliament about this electorate.

Parliament of
South Australia

School Computing Suite



Population - Up to 30 students, and 3 computer teaching staff.

Where - R-12 school in the inner suburbs of Adelaide.

Community - The computing suite is located in the library building of a reception to year 12 school in the inner suburbs of Adelaide. There are 50 desktop computers. There are three dedicated teaching staff who teach computer skills to primary students. Other classes will use the desktop computers for certain lessons and activities.

Fold Here

Instructions

1. Come up with a name for this electorate. Sometimes electorates are named after features in the area, the Traditional Owners of the land or a word in First Nations languages, or important people from that area.
2. Brainstorm what you think the big issues are for this electorate. What are the people worried about? What do they need?
3. Write 3-4 questions you want to ask the people in your electorate to help you understand their needs better.
4. Make a list of the 5-10 things you'd do to get involved in this community.
5. Draft your first speech to Parliament about this electorate.

Parliament of
South Australia

Outback Town



Population - 250

Where - North of the Flinders Ranges in South Australia's arid North.

Community - A small town in the dry and arid north of the Flinders Ranges, near the large salt lakes in SA's desert. The town is a former coal mining town, however much of the industry has shut down, seeing a major decline in the town's population. As it is located in a picturesque location near mountains and salt lakes, residents hope that the town can pivot to attract new sources of income, tourists, and residents.

Fold Here

Instructions

1. Come up with a name for this electorate. Sometimes electorates are named after features in the area, the Traditional Owners of the land or a word in First Nations languages, or important people from that area.
2. Brainstorm what you think the big issues are for this electorate. What are the people worried about? What do they need?
3. Write 3-4 questions you want to ask the people in your electorate to help you understand their needs better.
4. Make a list of the 5-10 things you'd do to get involved in this community.
5. Draft your first speech to Parliament about this electorate.

Parliament of
South Australia

Metro Shopping Centre



Population - Thousands of visitors every day – hundreds of casual and permanent staff.

Where - Located in Adelaide's southern suburbs.

Community - Many major retail chains have a store within the centre, alongside a supermarket and a large food court with popular fast food restaurant chains.

There is a large car park, but this fills up quickly, and can get dangerous. The food court is often low on seating.

Fold Here

Instructions

1. Come up with a name for this electorate. Sometimes electorates are named after features in the area, the Traditional Owners of the land or a word in First Nations languages, or important people from that area.

2. Brainstorm what you think the big issues are for this electorate. What are the people worried about? What do they need?

3. Write 3-4 questions you want to ask the people in your electorate to help you understand their needs better.

4. Make a list of the 5-10 things you'd do to get involved in this community.

5. Draft your first speech to Parliament about this electorate.

Parliament of South Australia

Big National Park



Population - Thousands of visitors each week.

Where - Southern coast of the Fleurieu Peninsula.

Community - A large national park on the coastline of the southern Fleurieu Peninsula, this park contains many popular hiking trails which visitors use to explore the park. Camping grounds allow visitors to pitch tents and stay at the park, however these camp grounds lack bins, benches, and proper spaces to light permitted fires. The park is also home to many native Australian wildlife species in the bush and sea.

Fold Here

Instructions

1. Come up with a name for this electorate. Sometimes electorates are named after features in the area, the Traditional Owners of the land or a word in First Nations languages, or important people from that area.

2. Brainstorm what you think the big issues are for this electorate. What are the people worried about? What do they need?

3. Write 3-4 questions you want to ask the people in your electorate to help you understand their needs better.

4. Make a list of the 5-10 things you'd do to get involved in this community.

5. Draft your first speech to Parliament about this electorate.

Parliament of South Australia

Metro Beach Suburb



Population - 8,000

Where - Adelaide's western coastline.

Community - The beach is extremely important to all residents, who have noticed that the local jetty has started to show signs of aging and wear-and-tear, along with erosion along the beach. The main road that leads to the CBD gets extremely congested during peak hour traffic, and public transport feels overcrowded. Many families have moved to the area and have noticed that it is very difficult to find a spot in childcare.

Fold Here

Instructions

1. Come up with a name for this electorate. Sometimes electorates are named after features in the area, the Traditional Owners of the land or a word in First Nations languages, or important people from that area.
2. Brainstorm what you think the big issues are for this electorate. What are the people worried about? What do they need?
3. Write 3-4 questions you want to ask the people in your electorate to help you understand their needs better.
4. Make a list of the 5-10 things you'd do to get involved in this community.
5. Draft your first speech to Parliament about this electorate.

**Parliament of
South Australia**

Rundle Mall



Population - Thousands of daily retail staff and visitors, and over 1000 businesses.

Where - Northeast corner of Adelaide's CBD.

Community - Rundle Mall is an open-air shopping mall and Adelaide's busiest commercial centre. Police, security guards, and cleaners also work in the mall.

Fold Here

Instructions

1. Come up with a name for this electorate. Sometimes electorates are named after features in the area, the Traditional Owners of the land or a word in First Nations languages, or important people from that area.
2. Brainstorm what you think the big issues are for this electorate. What are the people worried about? What do they need?
3. Write 3-4 questions you want to ask the people in your electorate to help you understand their needs better.
4. Make a list of the 5-10 things you'd do to get involved in this community.
5. Draft your first speech to Parliament about this electorate.

**Parliament of
South Australia**